
  
 Feet
   
 0 250 500

Project Element locations drawing from USACE draft 95% drawings, ESA draft 90% drawings, and previous work. All locations are approximate.

Legend					
	Fill Pad Area		New Stormwater Pond		Lower Existing Levee
	Raise Trail		New Channel - Bottom Width		Restoration Planting Area
	New Wave Attenuation Berm		New Channel - Top of Bank		Marysville City Limits
	New Creek Channel Berm		Completed Excavated Channels		
	Existing Primary Channel		New Levee - Toe of Slope		
	Existing Secondary Channel		New Levee - Top of Slope		



**Qwuloolt Estuary Restoration Site - Proposed Project Elements**  
**Marysville, Washington**

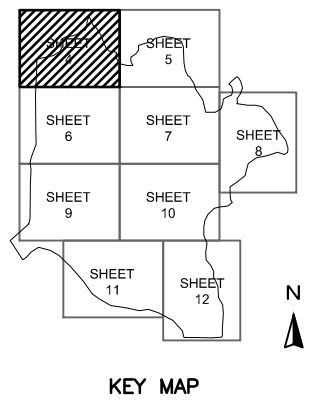
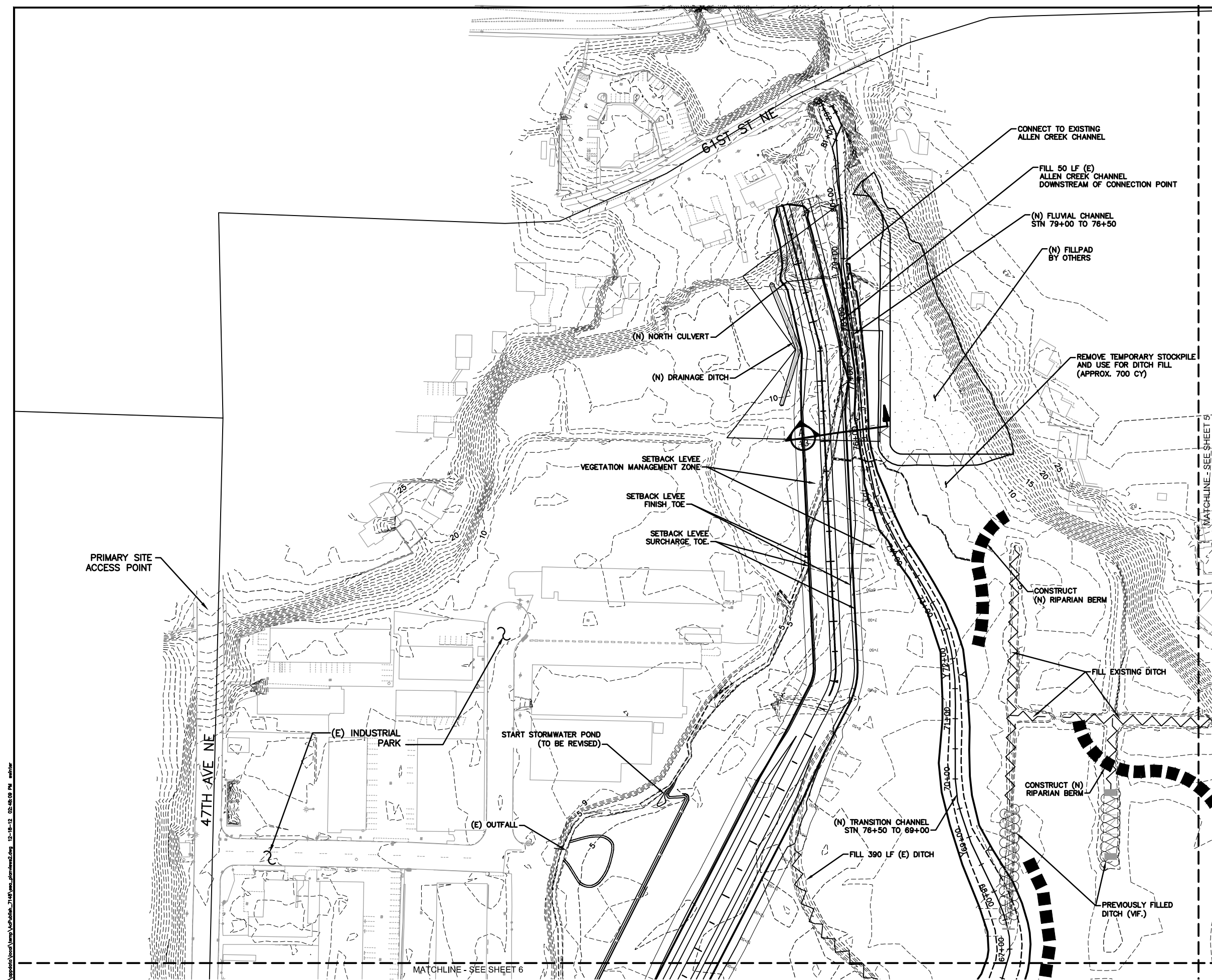






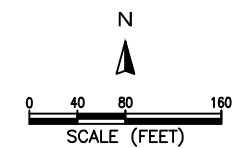






- SOURCE NOTES:**
1. THE SETBACK LEVEL, DRAINAGE, AND STORMWATER POND ARE BASED ON MICROSTATION FILES PROVIDED BY THE US ARMY CORPS OF ENGINEERS IN DECEMBER 2012.
  2. THE INTERNAL ELEMENTS OF CHANNELS, BERMS, AND DITCH FILL ARE BASED ON ESA'S FINAL PLANS FROM AUGUST 2012.
  3. NO AS-BUILT DATA FROM SUMMER 2012 HAVE BEEN INCORPORATED INTO THESE DRAWINGS.
  4. THESE DRAWINGS ARE FOR CONVENIENCE ONLY - NOT FOR CONSTRUCTION FROM THESE PLANS.
  5. FOR DETAILS AND MOST SECTIONS SEE RESPECTIVE FINAL PLANS.

- CONSTRUCTION NOTES:**
1. DEWATER EXISTING ALLEN CREEK CHANNEL ONLY AS NECESSARY TO CONNECT NEW CHANNEL
  2. CONTRACTOR TO SUBMIT DE-WATERING PLAN AT LEAST TEN BUSINESS DAYS PRIOR TO WORK.
  3. ENGINEER TO DETERMINE EXTENT OF DITCH FILL.
  4. TEMPORARY STOCKPILE GENERATED BY OTHERS, COORDINATE WITH PROJECT REPRESENTATIVE FOR AVAILABILITY.
  5. SEE SHEET 3 FOR ALLEN CREEK PHASING NOTES



REVISIONS		NO.	DESCRIPTION	BY	DATE
<p>ESA 5300 Sandstone Way, Suite 100 Seattle, WA 98148 P: (206) 738-8800</p>					
PREPARED BY:		TULALIP TRUSTEES			
PREPARED FOR:		PLAN VIEW GRADING			
SHEET TITLE:		QWULOOLT ESTUARY TIDAL WETLAND RESTORATION			
PROJECT:					
APPROVED					
DESIGNED		S. WINTER			
DRAWN		S. WINTER			
INCHARGE		B. BATTALIO License 42109			
SCALE AS SHOWN					
ESA JOB # D209584.01					
PROJECT # D209584.01					
DATE DEC 17, 2012					
SHEET					
4 OF X					

G:\Users\winter\_s\AppData\Local\Temp\AutoCAD\7148\AutoCAD\dwg\12-18-12\_02:48:00 PM\_mch1.rvt

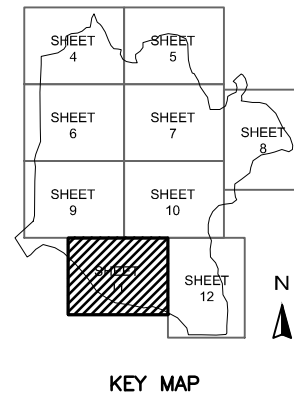
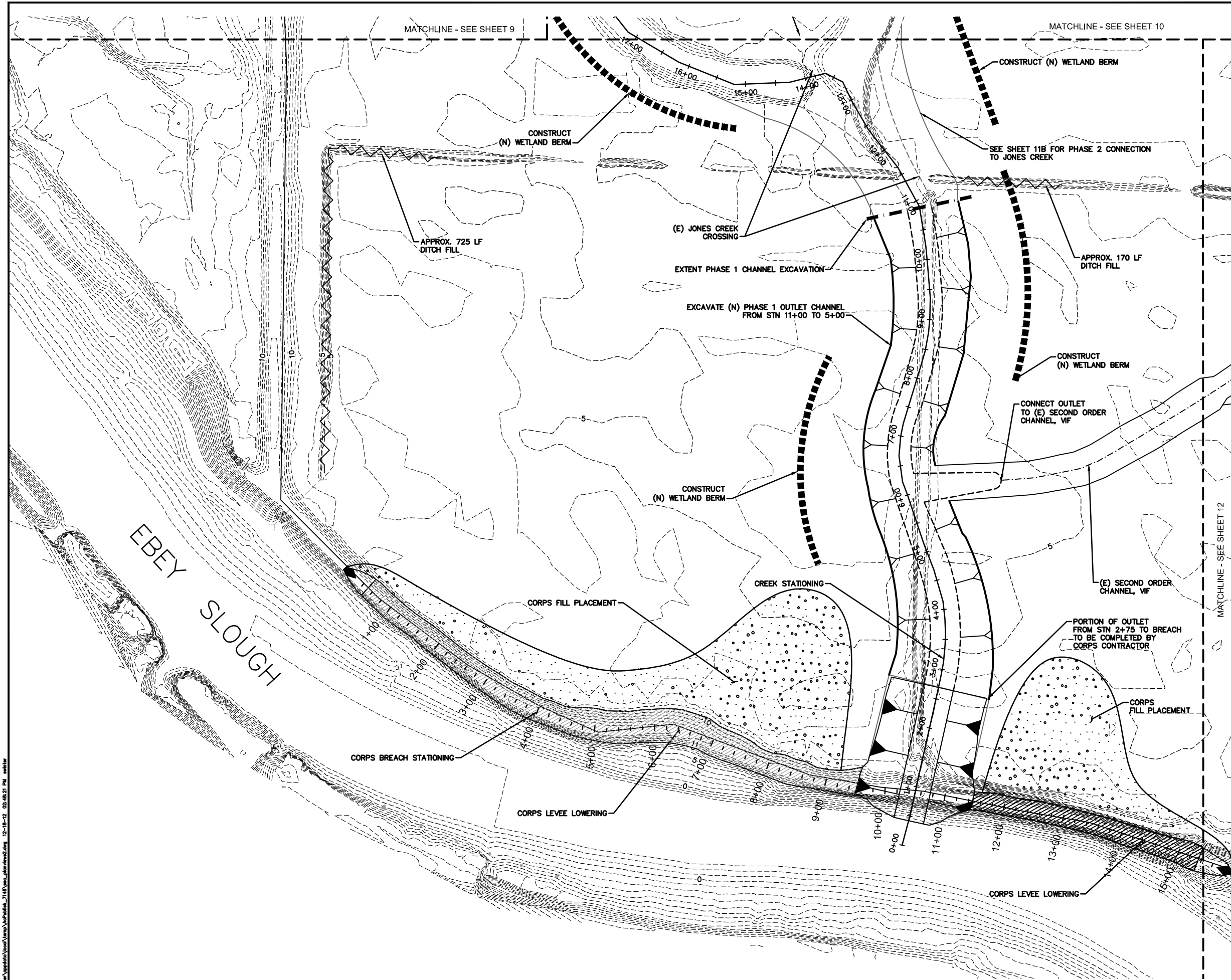






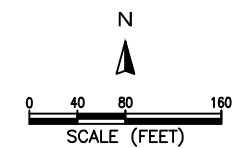






- SOURCE NOTES:**
1. THE SETBACK LEVIE, DRAINAGE, AND STORMWATER POND ARE BASED ON MICROSTATION FILES PROVIDED BY THE US ARMY CORPS OF ENGINEERS IN DECEMBER 2012.
  2. THE INTERNAL ELEMENTS OF CHANNELS, BERMS, AND DITCH FILL ARE BASED ON ESA'S FINAL PLANS FROM AUGUST 2012.
  3. NO AS-BUILT DATA FROM SUMMER 2012 HAVE BEEN INCORPORATED INTO THESE DRAWINGS.
  4. THESE DRAWINGS ARE FOR CONVENIENCE ONLY - NOT FOR CONSTRUCTION FROM THESE PLANS.
  5. FOR DETAILS AND MOST SECTIONS SEE RESPECTIVE FINAL PLANS.

- CONSTRUCTION NOTES:**
1. LEAVE AT LEAST 250 FEET FROM EXISTING EBHEY SLOUGH LEVIE AT SOUTH END OF PHASE 1 OUTLET CHANNEL.
  2. NO EXCAVATION SHALL OCCUR CLOSER THAN 250 FEET TO THE EBHEY SLOUGH LEVIE.
  3. STOCKPILE EXCAVATED MATERIALS IN APPROVED LOCATION AT DIRECTION OF PROJECT REPRESENTATIVE.
  4. DO NOT IMPEDE ACCESS TO EXISTING CROSSING ON JONES CREEK.
  5. SEE SHEET 11B FOR PHASE 2 OUTLET EXCAVATION PLAN.



REVISIONS		PREPARED BY: <b>ESA</b> 5300 Sande Way, Seattle, WA 98148 P: (206) 738-8800
NO.	DESCRIPTION	
PREPARED FOR: <b>TULALIP TRUSTEES</b>		PROJECT: <b>QWULOOLT ESTUARY TIDAL WETLAND RESTORATION</b>
SHEET TITLE: <b>PLAN VIEW GRADING - PHASE 1</b>		
APPROVED		
DESIGNED	S. WINTER	
DRAWN	S. WINTER	
INCHARGE	B. BATTALIO License 42109	
SCALE	AS SHOWN	
ESA JOB #	D209584.01	
PROJECT #	D209584.01	
DATE	DEC 17, 2012	
SHEET	11A OF X	

G:\Users\winter\AppData\Local\Temp\AutoCAD\11A.dwg 12-18-12 02:48:21 PM winter